

**THURSDAY, APRIL 7<sup>th</sup>**

5:25 a.m. Flight Group **A** - Load buses # 1 & # 2 at school - Hawaiian Air Flight # 1 @ 8:35 a.m.  
 5:25 a.m. Flight Group **B** - Load buses # 3 & # 4 at school - American Flight # 31 @ 8:30 a.m.  
 7:00 a.m. Flight Group **C** - Load buses # 5 & # 6 at school - Hawaiian Air Flight # 3 @ 10:45 a.m.  
 Arrival at airport – unload buses - Each participant is responsible for their belongings.  
 Please make sure every item, luggage, & instruments have an ID name tag.



Flights arrive in **HONOLULU** - collect luggage and instruments  
 Board charter buses for Honolulu City preview & transfer to hotel  
 Hotel check in **AQUA ALOHA SURF HOTEL** – Waikiki



after check in Lunch & free time in groups with chaperones – explore Waikiki Beach  
 5:15 p.m. Buses # 1, # 2, # 3, board for dinner at **"HARD ROCK CAFE"**  
 7:00 p.m. Buses # 4, # 5, # 6, board for dinner at **"HARD ROCK CAFE"**  
 7:30 p.m. Buses # 1, # 2, # 3 – drop group at **International Marketplace**  
 Shopping and sights **in groups** w/chaperones (open till 10:30 pm), 5 minute walk back to hotel  
 8:55 p.m. Buses # 4, # 5, # 6 – drop group at **International Marketplace**  
 Shopping and sights **in groups** w/chaperones (open till 10:30 pm), 5 minute walk back to hotel  
 10:55 p.m. Evening curfew and room check – everyone in own rooms - Private Security Guards on Duty



**FRIDAY, APRIL 8<sup>th</sup>**

7:15 - 8:15 a.m. Wake up – **dress & pack up for hike and beach day** - light continental breakfast at hotel  
 8:30 a.m. Buses # 5 & # 6, depart for **DIAMOND HEAD** hike  
 9:00 a.m. Buses # 3 & # 4, depart for **DIAMOND HEAD** hike  
 9:30 a.m. Buses # 1 & # 2, depart for **DIAMOND HEAD** hike  
 8:30 a.m. **DIAMOND HEAD** – “stairway to heaven”- breath taking views of Honolulu from this famous volcano  
 after hike Board buses and depart for **KAILUA BEACH PARTY**



Stop enroute for lunch at fast food locations  
 Arrive **KAILUA BEACH** – afternoon of fun, sun & surf - kayaks, boogie boards and snorkel equipment provided for your use – soft drinks and bottled water also provided

**PLEASE WEAR SUNSCREEN, COVER UP and LIMIT EXPOSURE TO SUN**

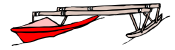
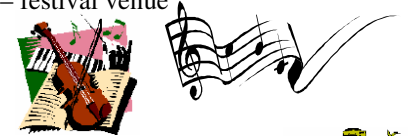
5:00 - 5:45 p.m. Buses depart for hotel # 5 & 6 @ 5:00 p.m. / #3 & 4 @ 5:20 p.m. / 1 & 2 @ 5:40 p.m.  
 6:30 – 8:30 p.m. Dinner in small groups at **PERRY’S SMORGY** – 5 min. walk from hotel – vouchers provided  
 Free time evening

**STUDENTS MUST ALWAYS BE IN GROUPS OF 3 OR MORE when going out**

9:00 p.m. Return to hotel – check in with chaperone  
**Earlier curfew due to very early departure for music festival tomorrow**  
 10:15 p.m. Evening curfew and room check – **everyone in own rooms** - Private Security Guards on Duty

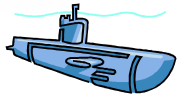
**SATURDAY, APRIL 9<sup>th</sup>**

5:15 a.m. Wake up – dress in performance attire, bring change of clothes - casual & sweatshirt  
 6:00 a.m. All 6 buses depart for Brigham Young Univ. (BYU) – festival venue  
 Hot buffet breakfast provided at BYU  
 8:00 am-2:50 pm. **MUSIC PERFORMANCES and ADJUDICATION**  
 12:30 p.m. Lunch – provided at festival  
 3:00 p.m. Change clothes and store instruments in rooms provided at BYU  
 3:30 – 9:30 p.m. **POLYNESIAN CULTURAL CENTER (PCC)**  
 visit 7 South Pacific villages, Island Demonstrations, **IMAX Films**, Canoe Pageant,  
 6:00 p.m. Dinner – PCC Gateway Restaurant – use vouchers provided  
 7:30 p.m. Spectacular show **Horizons**, Polynesian revue of song and dance (reserved seats)  
 9:30 p.m. Retrieve instruments and performance attire stored - board buses and return to hotel  
 11:00 p.m. Evening curfew and room check – **everyone in own rooms** - Security Guardson Duty



**SUNDAY, APRIL 10<sup>th</sup>**

6:10 a.m. Wake up - casual wear today - **NO BACKPACKS OR WAIST PACKS**  
 6:45 a.m. Continental Breakfast at hotel  
 7:10 a.m. Buses # 4, # 5, # 6, depart for Pearl Harbor  
 7:55 a.m. Buses # 1, # 2, # 3 depart for Pearl Harbor  
 7:35 a.m. Buses # 4, # 5, # 6 - **USS ARIZONA MEMORIAL**  
 8:30 a.m. Buses # 1, # 2, # 3 - **USS ARIZONA MEMORIAL**  
 10:00 a.m.- noon **USS BOWFIN MUSEUM & SUBMARINE TOUR** – all groups  
 Noon Board buses for return to hotel  
 12:30 p.m. Final Waikiki free time and independent lunch on your own in groups  
 3:30 p.m. Return to hotel and prepare for luau tonight - **bring sweatshirt or light jacket**  
 4:15 p.m. Board buses # 1 – 6 for transfer to Germaine’s Luau - “Robert’s” deluxe charter buses  
**GERMAINE’S LUAU** – provides the most traditional of Hawaiian experiences - **the luau**.  
 On their private beach they’ll show you what partying Hawaiian-style is all about. Enjoy the royal procession, the imu ceremony (where the roast pig is raised from its underground oven), the extensive Luau feast. and thrill to a wide variety of Polynesian entertainment  
 9:30 p.m. Board buses - Return to hotel  
 11:00 p.m. Evening curfew and room check – **everyone in own rooms** - Security Guards on Duty



**MONDAY, APRIL 11<sup>th</sup>**

8:15 – 9:15 a.m. Wake Up, Pack & Continental Breakfast – **depending upon your flight schedule**  
**Flights: A & B** Buses 1, 2, 3, 4  
**9:45 a.m.** Room inspection – all students must be present in their room, packed, ready to go  
**Flight: C** Chaperones will come to your room, collect keys and dismiss you to bus  
**11:30 a.m.** Buses 5& 6



*Continued on Next Page*